

# Library Items, Creating-Saving-Importing

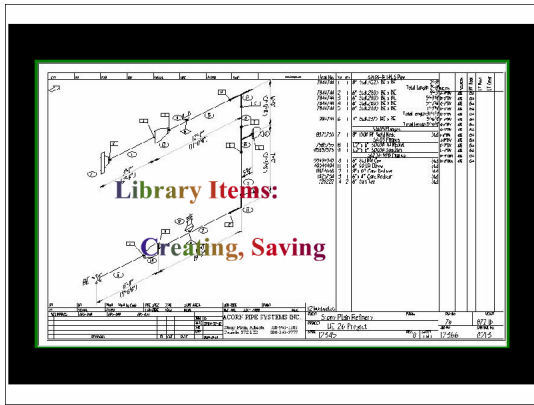


Fig 1

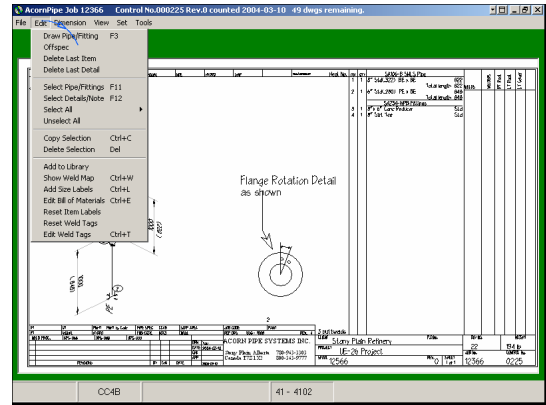
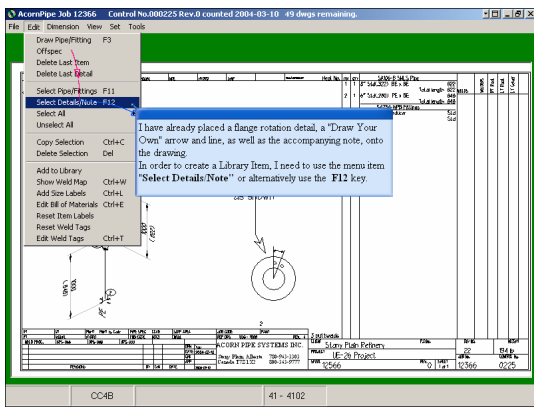
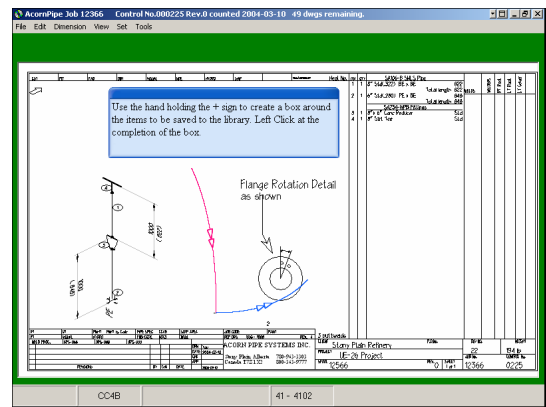


Fig 2



**Fig 3** - I have already placed a flange rotation detail, a "Draw Your Own" arrow and line, as well as the accompanying note, onto the drawing.

In order to create a Library Item, I need to use the menu item "Select Details/Note" or alternatively use the F12 key.



**Fig 4** - Use the hand holding the + sign to create a box around the items to be saved to the library. Left Click at the completion of the box.

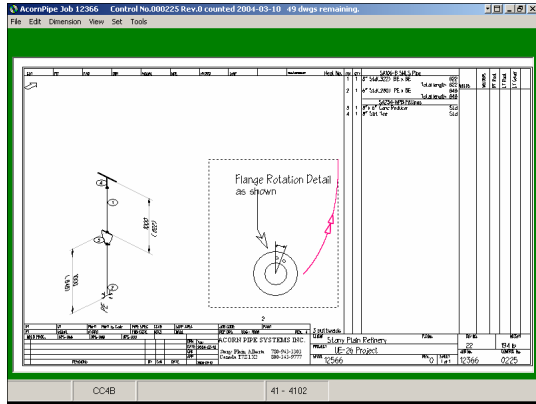


Fig 5

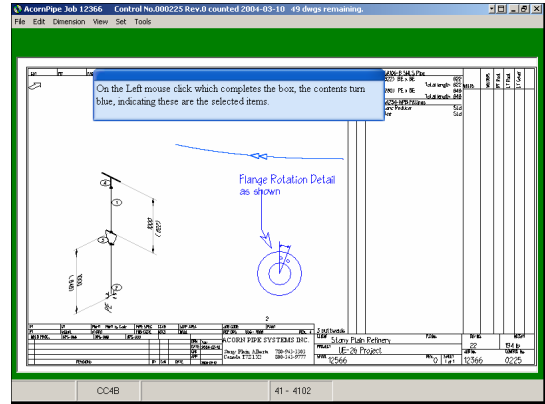


Fig 6 - On the Left mouse click which completes the box, the contents turn blue, indicating these are the selected items.

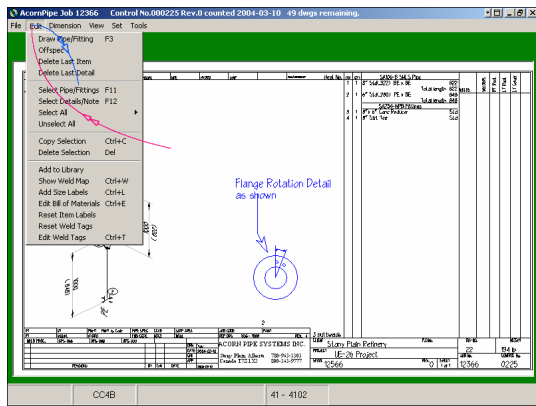


Fig 7

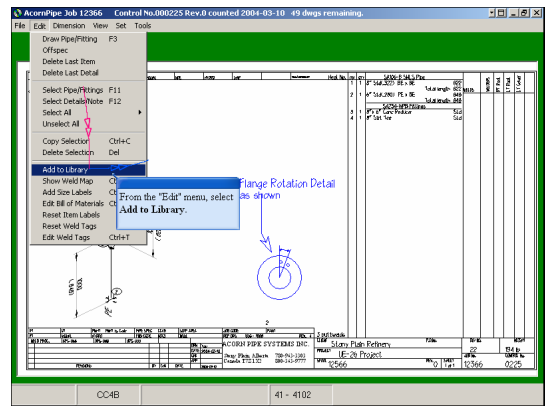


Fig 8 - From the "Edit" menu, select Add to Library.

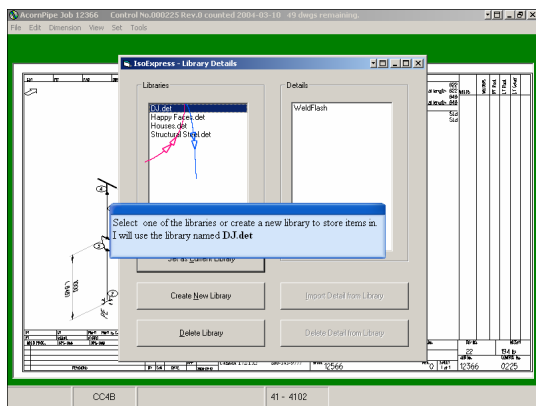


Fig 9 - Select one of the libraries or create a new library to store items in. I will use the library named DJ.det

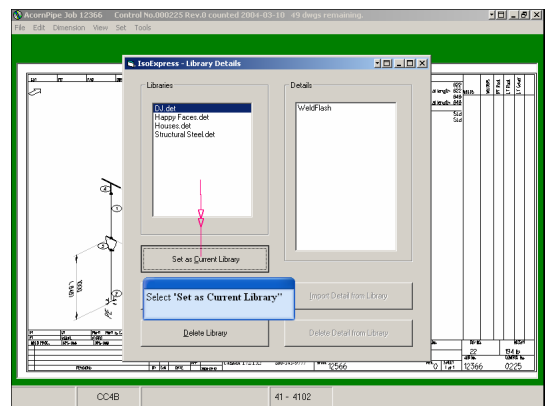
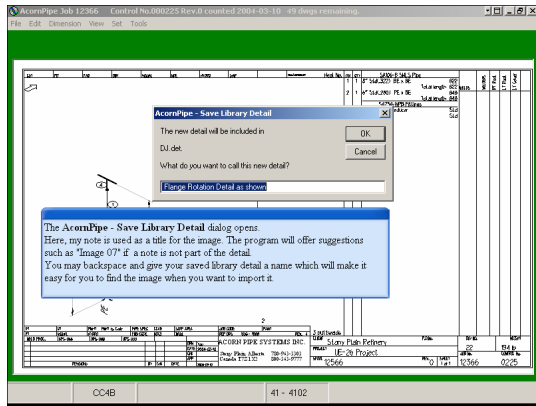


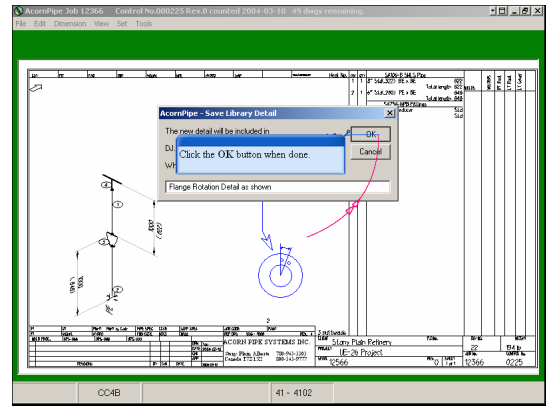
Fig 10 - Select "Set as Current Library"



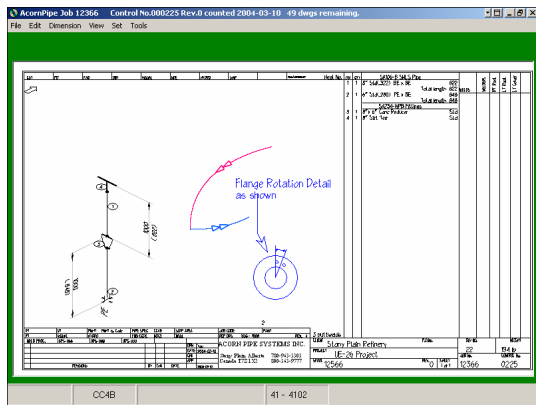
**Fig 11** - The AcornPipe - Save Library Detail dialog opens.

Here, my note is used as a title for the image. The program will offer suggestions such as "Image 07" if a note is not part of the detail.

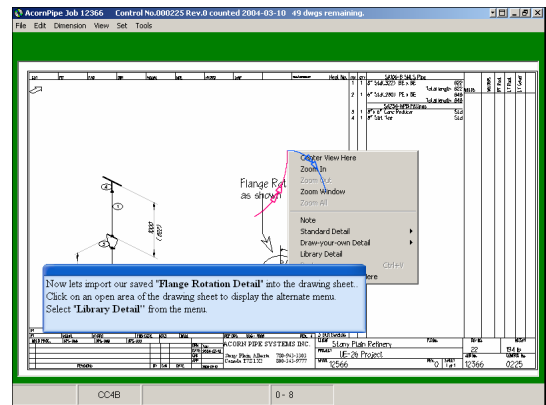
You may backspace and give your saved library detail a name which will make it easy for you to find the image when you want to import it.



**Fig 12** - Click the OK button when done.



**Fig 13**



**Fig 14** - Now lets import our saved "Flange Rotation Detail" into the drawing sheet..

Click on an open area of the drawing sheet to display the alternate menu.

Select "Library Detail" from the menu.

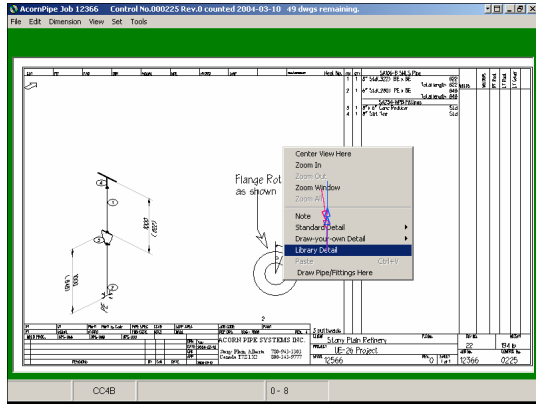


Fig 15

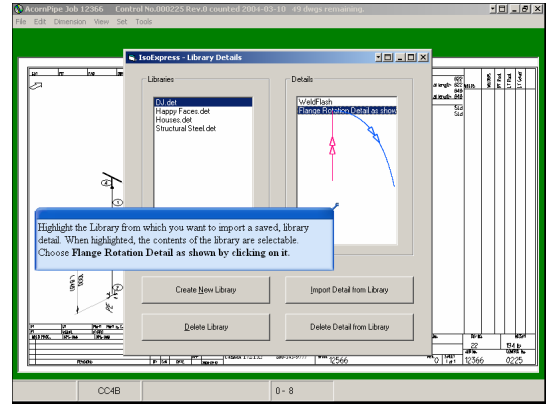


Fig 16 - Highlight the Library from which you want to import a saved, library detail. When highlighted, the contents of the library are selectable.

Choose Flange Rotation Detail as shown by clicking on it.

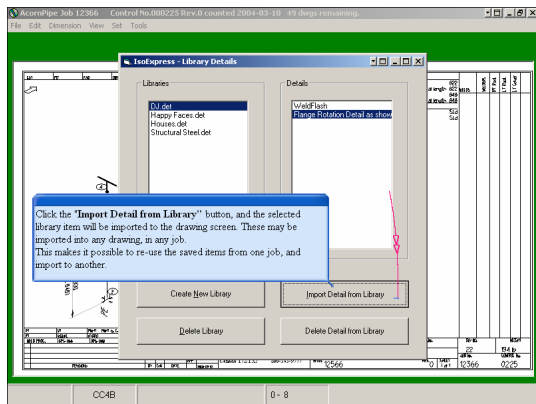


Fig 17 - Click the "Import Detail from Library" button, and the selected library item will be imported to the drawing screen. These may be imported into any drawing, in any job.

This makes it possible to re-use the saved items from one job, and import to another.

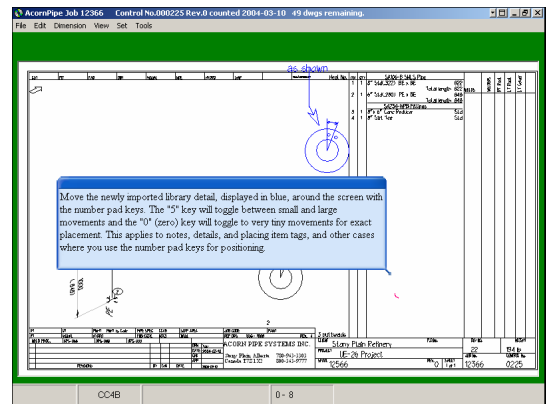


Fig 18 - Move the newly imported library detail, displayed in blue, around the screen with the number pad keys. The "5" key will toggle between small and large movements and the "0" (zero) key will toggle to very tiny movements for exact placement. This applies to notes, details, and placing item tags, and other cases where you use the number pad keys for positioning.

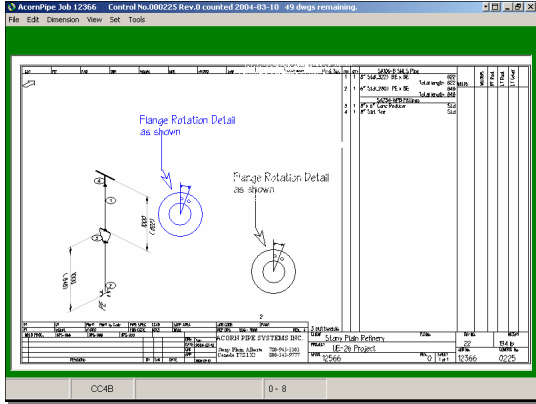


Fig 19

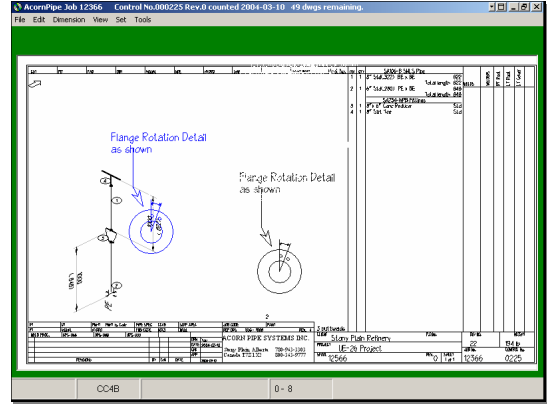


Fig 20

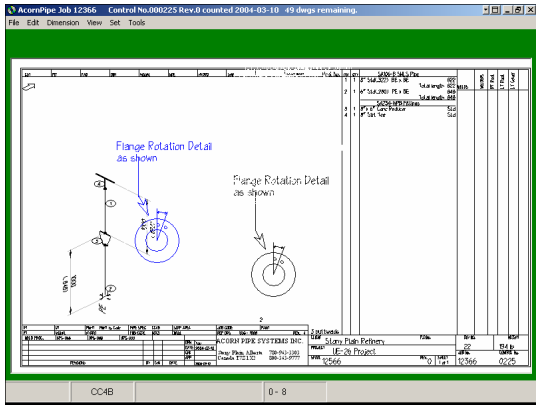


Fig 21

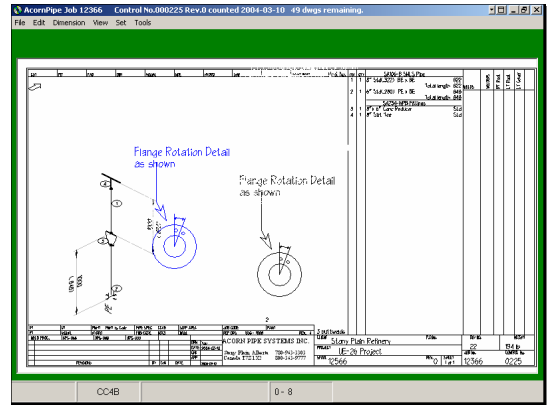


Fig 22

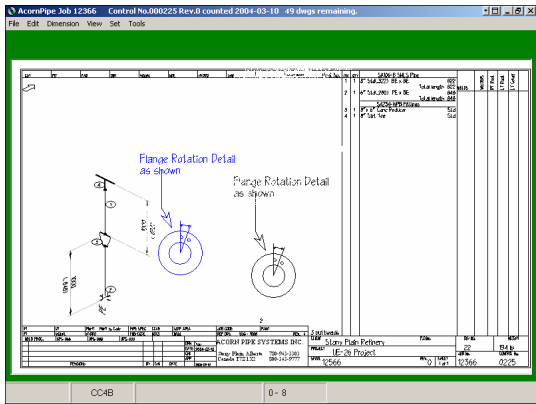


Fig 23

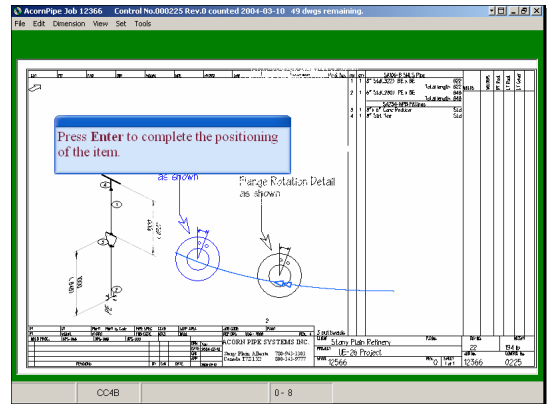


Fig 24 - Press Enter to complete the positioning of the item.

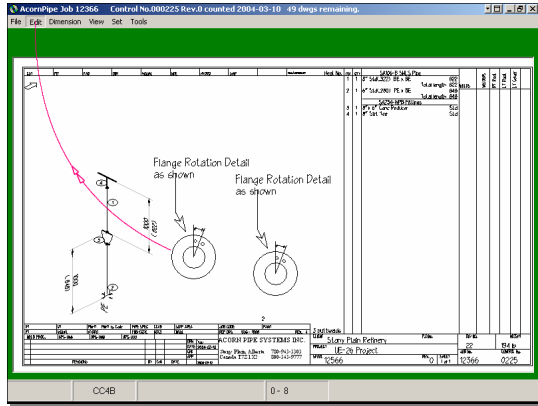


Fig 25

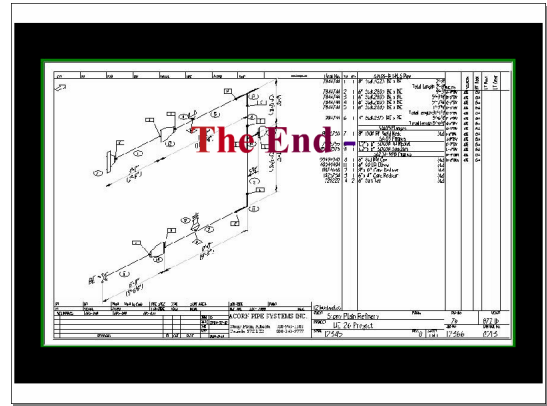


Fig 26