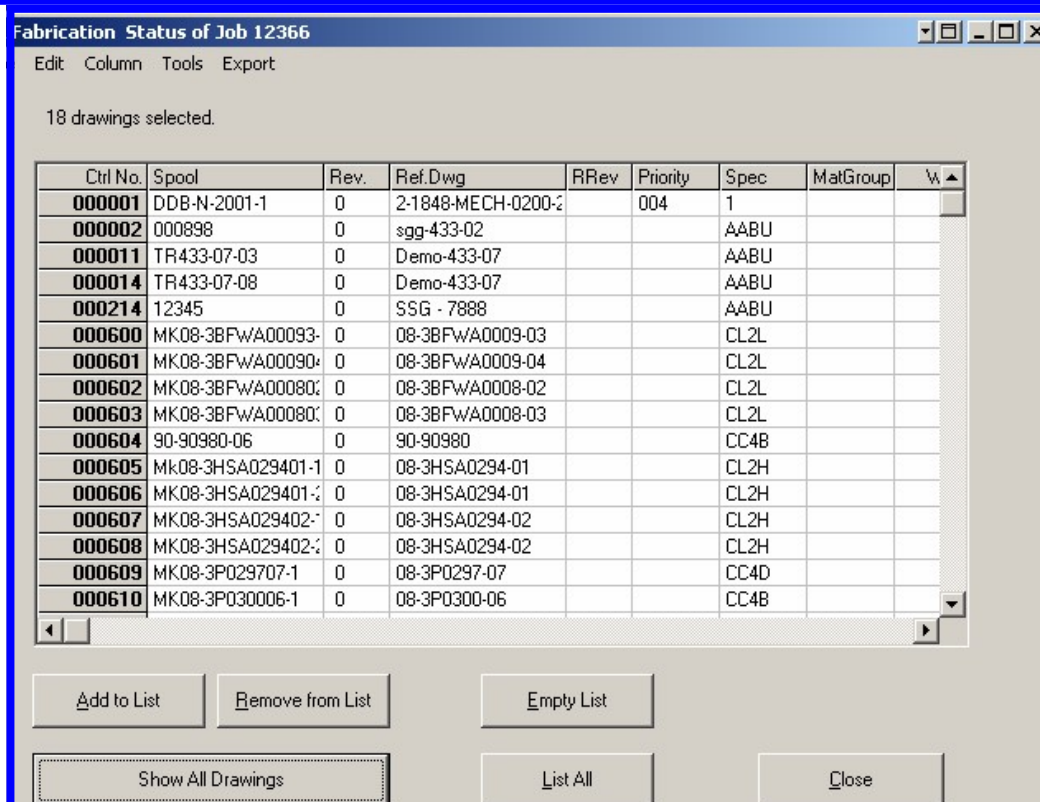


Fonts recommended for the display and alignment of reports are:

**Courier, Courier New, and Fixdsys.**

My tests shows that the Fixdsys font, if available on your computer produces a nice **bolder** text for easy reading.

**Change the font for reports:** In the reports section, with a report displayed, select "Format" from the menu, then choose "Font". Select one of these recommended fonts from the list. Make sure "Wordwrap" is selected.

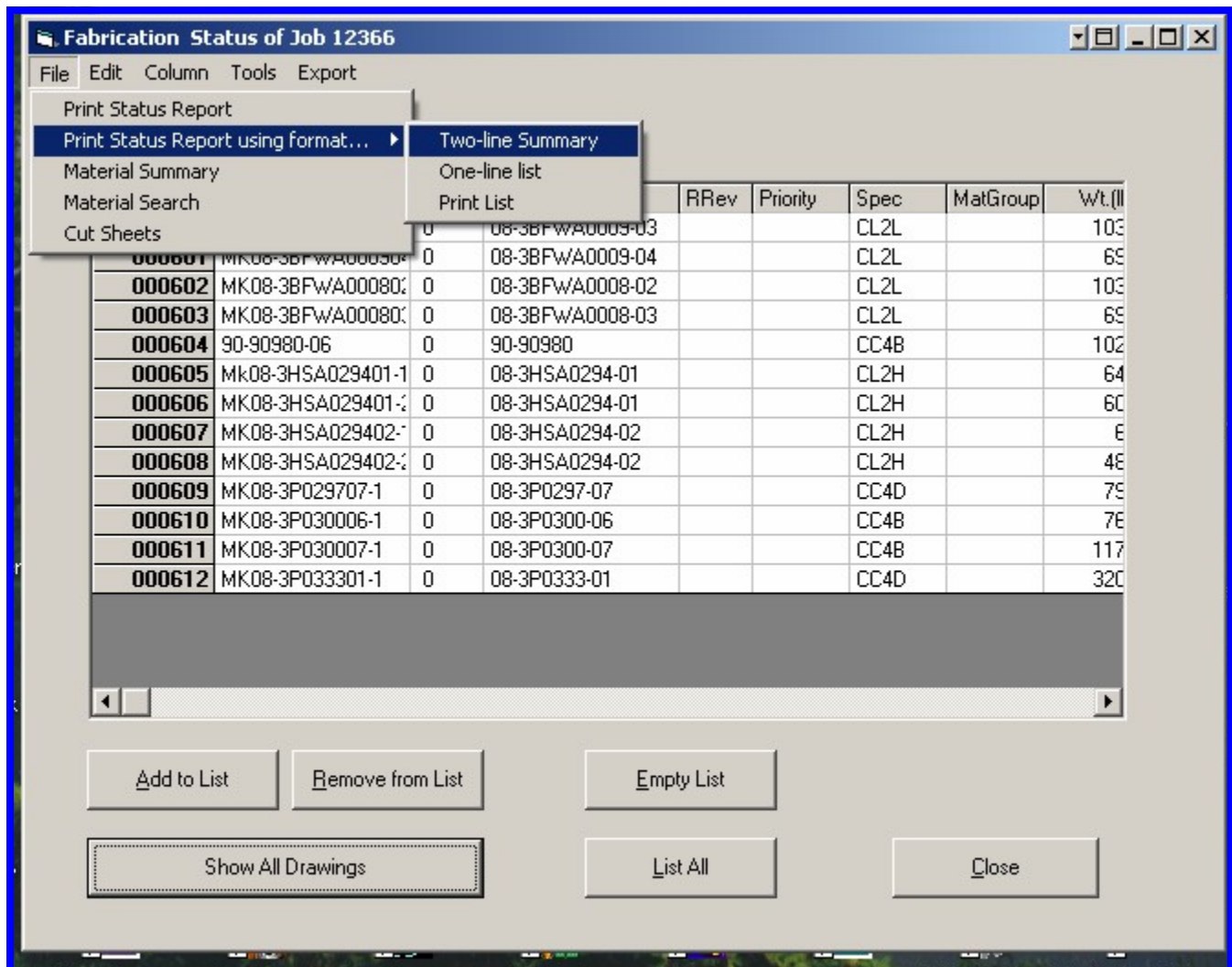


To begin, click on the material control button on the main program screen.

**Below:** Next double click on the "Control Number", under the Cnrl No column so the control number is highlighted by bolded text. These highlighted drawings are now selected, and are on the list you will use in the reports.

Next—Choose the type of report you wish to create, from the “File” menu, based on the list of selected drawings.

The choice, which is highlighted above is the “Two Line Status Report. See Next Page.



# Fabrication Status Reports

6 drawings selected.

Ctrl No.	Spool	Rev.	Ref.Dwg	Priority	Spec	Wt.(lb)	Dia-Inch	Dwn by	Dwn date	Paint
000600	MK08-3BFWA00093	0	08-3BFWA0009-03		CL2L	1035	26.0	JY	2003-09-09	
000601	MK08-3BFWA00090	1	08-3BFWA0009-04		CL2L	695	51.0	JY	2003-09-09	Prime Only
000602	MK08-3BFWA00080	1	08-3BFWA0008-02	2	CL2L	1034	22.0	JY	2003-09-10	
000603	MK08-3BFWA00080	1	08-3BFWA0008-03	2	CL2L	690	57.0	JY	2003-09-10	Prime Only
000604	90-90980-06	2	90-90980	2	CC4B	1027	92.0	DJ	2003-11-24	Prime Only
000605	Mk08-3HSA029401-1	0	08-3HSA0294-01		CL2H	648	86.0	JY	2003-09-10	

**Above:** I have created my current list of drawings, which will be used in this report.

The Header information, outlined in orange, here, displays the column headers, and placement, used in the reports.

```

25/03/2004 6:24:51 PM           Drawings List on 12366
                               Page 1

Ctrl No.   Spool           Rev.   Ref.Dwg           Priority  Spec           Wt. (lb)
Dia-Inch   Dwn by         Dwn date   Paint
000600     MK08-3BFWA00093-1  0       08-3BFWA0009-03           CL2L       1035
26.0       JY             2003-09-09
000601     MK08-3BFWA000904-1  1       08-3BFWA0009-04           CL2L       695
51.0       JY             2003-09-09   Prime Only
000602     MK08-3BFWA000802-1  1       08-3BFWA0008-02           2          CL2L       1034
22.0       JY             2003-09-10
000603     MK08-3BFWA000803-1  1       08-3BFWA0008-03           2          CL2L       690
57.0       JY             2003-09-10   Prime Only
000604     90-90980-06         2       90-90980           2          CC4B       1027
92.0       DJ             2003-11-24   Prime Only
000605     Mk08-3HSA029401-1  0       08-3HSA0294-01           CL2H       648
86.0       JY             2003-09-10

6 drawings, totalling 334.0 Dia Inch,  5129 lb.
    
```

**Above:** Preview of status report. The headers area is highlighted by the orange bar.

Note that the columns allow you to track the Control number, the spool number, the reference drawing number, revision number, the priority, drafter's initials, weights, diameter inches of weld, etc.

Text is in Courier font.

## Creating the Material Summary Report

The screenshot shows a software window titled "Fabrication Status of Job 12366". The "File" menu is open, highlighting "Material Summary". Below the menu is a table with the following columns: Rev., Ref.Dwg, RRev, Priority, Spec, MatGroup, and Wt. The table contains 12 rows of material data. The first column, representing control numbers, has several entries in bold text: 000601, 000602, 000603, 000604, 000605, 000606, 000607, 000608, 000609, 000610, 000611, and 000612. At the bottom of the window, there are several buttons: "Add to List", "Remove from List", "Empty List", "Show All Drawings", "List All", and "Close".

Rev.	Ref.Dwg	RRev	Priority	Spec	MatGroup	Wt. (lb)
0	08-3BFWA0009-03			CL2L		103
0	08-3BFWA0009-04			CL2L		69
0	08-3BFWA0008-02			CL2L		103
0	08-3BFWA0008-03			CL2L		69
0	90-90980-06			CC4B		102
0	08-3HSA029401-01			CL2H		64
0	08-3HSA029401-01			CL2H		60
0	08-3HSA029402-02			CL2H		6
0	08-3HSA029402-02			CL2H		48
0	08-3P029707-01			CC4D		79
0	08-3P030006-01			CC4B		76
0	08-3P030007-01			CC4B		117
0	08-3P033301-01			CC4D		320

Double click on the “Control Number”, under the Cnrl No column, to select each drawing, so the control number is highlighted by bolded text. These highlighted drawings are now selected, and are on the list you will use in the reports.

**Fabrication Status of Job 12366**

File Edit Column Tools Export

- Print Status Report
- Print Status Report using format... ▶
- Material Summary**
- Material Search
- Cut Sheets

Rev.	Ref.Dwg	RRev	Priority	Spec	MatGroup	Wt.(lb)
0	08-3BFwA0009-03			CL2L		103
<b>000601</b>	MK08-3BFwA0009-04			CL2L		69
<b>000602</b>	MK08-3BFwA0008-01			CL2L		103
<b>000603</b>	MK08-3BFwA0008-02			CL2L		69
<b>000604</b>	90-90980-06			CC4B		102
<b>000605</b>	MK08-3HSA029401-1			CL2H		64
<b>000606</b>	MK08-3HSA029401-2			CL2H		60
<b>000607</b>	MK08-3HSA029402-1			CL2H		6
<b>000608</b>	MK08-3HSA029402-2			CL2H		48
<b>000609</b>	MK08-3P029707-1			CC4D		79
<b>000610</b>	MK08-3P030006-1			CC4B		76
<b>000611</b>	MK08-3P030007-1			CC4B		117
<b>000612</b>	MK08-3P033301-1			CC4D		320

Buttons: Add to List, Remove from List, Empty List, Show All Drawings, List All, Close

**Material Summary for 12366**

Description	Material	Quantity
3/4" XS(.154) Pipe	SA106-B SMLS	5.90 ft
3" XS(.300) Pipe	SA106-B SMLS	8.09 ft
4" XS(.338) Pipe	SA106-B SMLS	12.91 ft
6" Std(.280) Pipe	SA106-B SMLS	7.42 ft
6" XS(.432) Pipe	SA106-B SMLS	39.84 ft
6" Sch 120(.562) Pipe	SA106-B SMLS	78.44 ft
10" Std(.365) Pipe	SA106-B SMLS	72.97 ft
10" Std(.365) Pipe	SA106-B SMLS	2.12 ft
18" XS(.500) Pipe	SA106-B SMLS	32.64 ft
2" 1,500# RTJ Weld Neck XS	SA105	2
4" 600# RF Weld Neck XS	SA105	2
6" 600# RF Weld Neck XS	SA105	4
6" 900# RTJ Weld Neck Sch 120	SA105	2
10" 150# RF Weld Neck Std	SA105	3
6" 90 LR Elbow XS	SA234-WPB	4
6" 90 LR Elbow Sch 120	SA234-WPB	5

Buttons: Print Materials Summary, Close

23/03/2004 12:54:06 PM Material Summary for 12366

13 Drawings

000600 000601 000602 000603 000604 000605 000606 000607 000608 000609 000610 000611  
000612

Total Weight 12226 lb 625.0 diameter-inches

Pipe

Description	Material	Quantity
3/4" XS(.154) Pipe	SA106-B SMLS	5.90 ft
3" XS(.300) Pipe	SA106-B SMLS	8.09 ft
4" XS(.338) Pipe	SA106-B SMLS	12.91 ft
6" Std(.280) Pipe	SA106-B SMLS	7.42 ft
6" XS(.432) Pipe	SA106-B SMLS	39.84 ft
6" Sch 120(.562) Pipe	SA106-B SMLS	78.44 ft
10" Std(.365) Pipe	SA106-B SMLS	72.97 ft
10" Std(.365) Pipe	SA106-B SMLS	2.12 ft
18" XS(.500) Pipe	SA106-B SMLS	32.64 ft

Flanges

2" 1,500# RTJ Weld Neck XS	SA105	2
4" 600# RF Weld Neck XS	SA105	2
6" 600# RF Weld Neck XS	SA105	4
6" 900# RTJ Weld Neck Sch 120	SA105	2
10" 150# RF Weld Neck Std	SA105	3

Fittings

6" 90 LR Elbow XS	SA234-WPB	4
6" 90 LR Elbow Sch 120	SA234-WPB	5
6" 90 LR Elbow XXS	SA234-WPB	1
10" 90 LR Elbow Std	SA234-WPB	6
6"x 4" Ecc Reducer XS	SA234-WPB	2
18" XH BW Cap XS	SA234-WPB	1
2"x 6" STD WOL XS	SA105	2
3/4"x 6" 3,000# TH Nipolet	SA105	1
1"x 10" 3,000# SW Elbolet	SA105	1
3/4"x 6" 3,000# Sockolet	SA105	2
1"x 10" 3,000# Sockolet	SA105	1
3/4"x 10" 3,000# TH Elbolet	SA105	1
3/4"x 6" 3,000# Thredolet	SA105	1
3/4" SW Plug XS	SA105	1

Miscellaneous

Base Support Tag: BDA2	1
Length equals 11-5/8in to U/S of Plate	
Special Support Tag: 8-3-PS-976	1
Length equals 11-5/8in to U/S of Plate	
Pipe Shoe TAG: S2C1	7
Pipe Shoe TAG: S2C1-L	2
Pipe Shoe TAG: S7C1-18	2
Base Support Tag: BS2-3	1

**Material Search With Summary**— Lists the Drawing Number for each item on every drawing.

Double click on the “Control Number”, under the Cnrl No column, to select each drawing, so the control number is highlighted by bolded text. These highlighted drawings are now selected, and are on the list you will use in the reports. Select Material Search. See sample report below.

Cntrl No	Part No	Part Desc	QTY	Unit	Material	Spec	Notes
000601	MK08-3BFWA0009-03				CL2L		103
000602	MK08-3BFWA0009-04				CL2L		69
000603	MK08-3BFWA0008-02				CL2L		103
000603	MK08-3BFWA0008-03				CL2L		69
000604	90-90980-06				CC4B		102
000605	Mk08-3HSA029401-1				CL2H		64
000606	MK08-3HSA029401-2				CL2H		60
000607	MK08-3HSA029402-1				CL2H		6
000608	MK08-3HSA029402-2				CL2H		48
000609	MK08-3P029707-1				CC4D		79
000610	MK08-3P030006-1				CC4B		78

Search12366.txt - Notepad

File Edit Format View Help

**Pipe**

Description/Material	Dwg.No.	Quantity
3/4" XS(.154) Pipe SA106-B SMLS	<b>000605</b>	5.9 ft
3" XS(.300) Pipe SA106-B SMLS	<b>000603</b>	7.4 ft
	<b>000607</b>	.7 ft
4" XS(.338) Pipe SA106-B SMLS	<b>000601</b>	1. ft
	<b>000603</b>	1.7 ft
	<b>000607</b>	1.7 ft
	<b>000608</b>	8.5 ft
6" Std(.280) Pipe SA106-B SMLS	<b>000604</b>	7.4 ft
6" XS(.432) Pipe SA106-B SMLS	<b>000605</b>	15.9 ft
	<b>000606</b>	14.5 ft
	<b>000608</b>	9.5 ft
6" Sch 120(.562) Pipe SA106-B SMLS	<b>000600</b>	27.2 ft
	<b>000601</b>	11.8 ft
	<b>000602</b>	27.2 ft
	<b>000603</b>	12.1 ft
10" Std(.365) Pipe SA106-B SMLS	<b>000604</b>	14.5 ft
	<b>000609</b>	19.6 ft
	<b>000610</b>	11.8 ft
	<b>000611</b>	27. ft

10" 90 LR Elbow Std	000604	2
SA234-WPB	000610	3
	000611	1
6"x 4" Ecc Reducer XS	000607	1
SA234-WPB	000608	1
18" XH BW Cap XS	000612	1
SA234-WPB		
2"x 6" STD WOL XS	000601	1
SA105	000603	1
3/4"x 6" 3,000# TH Nipolet	000600	1
SA105		
1"x 10" 3,000# SW Elbolet	000604	1
SA105		
3/4"x 6" 3,000# Sockolet	000605	2
SA105		
1"x 10" 3,000# Sockolet	000604	1
SA105		
3/4"x 10" 3,000# TH Elbolet	000604	1
SA105		
3/4"x 6" 3,000# Thredolet	000605	1
SA105		
3/4" SW Plug XS	000605	1
SA105		
Miscellaneous		
Base Support Tag: BDA2	000601	1
Length equals 11-5/8in to U/S of Plate		
Special Support Tag: 8-3-PS-976	000603	1
Length equals 11-5/8in to U/S of Plate		
Pipe Shoe TAG: S2C1	000600	2
	000602	1
	000608	1
	000609	1
	000611	2

# Pipe Cuts List - Cut Sheets

**Fabrication Status of Job 12366**

File Edit Column Tools Export

- Print Status Report
- Print Status Report using format...
- Material Summary
- Material Search
- Cut Sheets**

Rev

Control No	Material	Rev	Control No	Material	Rev	Control No	Material	Rev
<b>000601</b>	MK08-3BFWA00080	0	08-3BFWA0008-02	CL2L	103			
<b>000602</b>	MK08-3BFWA00080	0	08-3BFWA0008-03	CL2L	69			
<b>000603</b>	MK08-3BFWA00080	0	08-3BFWA0008-03	CL2L	69			
<b>000604</b>	90-90980-06	0	90-90980	CC4B	102			
<b>000605</b>	Mk08-3HSA029401-1	0	08-3HSA0294-01	CL2H	64			
<b>000606</b>	MK08-3HSA029401-1	0	08-3HSA0294-01	CL2H	60			
<b>000607</b>	MK08-3HSA029402-1	0	08-3HSA0294-02	CL2H	6			
<b>000608</b>	MK08-3HSA029402-1	0	08-3HSA0294-02	CL2H	48			
<b>000609</b>	MK08-3P029707-1	0	08-3P0297-07	CC4D	79			
<b>000610</b>	MK08-3P030006-1	0	08-3P0300-06	CC4B	76			
<b>000611</b>	MK08-3P030007-1	0	08-3P0300-07	CC4B	117			
<b>000612</b>	MK08-3P033301-1	0	08-3P0333-01	CC4D	320			

Buttons: Add to List, Remove from List, Empty List, Show All Drawings, List All, Close

Double click on the "Control Number", under the Cnrl No column, to select each drawing, so the control number is highlighted by bolded text. These highlighted drawings are now selected, and are on the list you will use in the reports. Select Cut Sheets from the Menu. See sample report below.

**Cut Sheets for 12366**

Description	Material	Length	Remarks	Control No	Revision	ItemLabel
18" XS(.500) BE x BE	SA106-B SMLS	32'-7 11/16		000612	00	1
10" Std(.365) BE x BE	SA106-B SMLS	24'-0 3/4		000611	00	2
10" Std(.365) BE x BE	SA106-B SMLS	19'-7 1/2		000609	00	1
10" Std(.365) BE x BE	SA106-B SMLS	6'-10		000610	00	2
10" Std(.365) BE x BE	SA106-B SMLS	4'-10		000604	00	4
10" Std(.365) BE x BE	SA106-B SMLS	4'-5		000604	00	3
10" Std(.365) BE x BE	SA106-B SMLS	3'-6		000610	00	3
10" Std(.365) BE x BE	SA106-B SMLS	2'-11 13/16		000611	00	1
10" Std(.365) BE x BE	SA106-B SMLS	2'-9		000604	00	1
10" Std(.365) BE x BE	SA106-B SMLS	2'-6		000604	00	2
10" Std(.365) BE x BE	SA106-B SMLS	1'-5 9/16		000610	00	1
10" Std(.365) on 18" XS x BE<1'4>	SA106-B SMLS	1'-5 1/2		000612	00	2
10" Std(.365) on 18" XS x BE<6 3/8>	SA106-B SMLS	7 7/8		000612	00	3
6" Std(.280) BE x BE	SA106-B SMLS	7'-5		000604	00	5
6" XS(.432) BE x BE	SA106-B SMLS	7'-11		000606	00	3
6" XS(.432) BE x BE	SA106-B SMLS	6'-8		000608	00	2
6" XS(.432) BE x BE	SA106-B SMLS	6'-2 9/16		000605	00	1
6" XS(.432) BE x BE	SA106-B SMLS	6'-2 9/16		000606	00	1
6" XS(.432) BE x BE	SA106-B SMLS	5'-9 3/8		000605	00	3
6" XS(.432) BE x BE	SA106-B SMLS	2'-9 5/8		000608	00	1
6" XS(.432) RF x RF	SA106-B SMLS	1'-11		000605	00	5

Buttons: Print Cut Sheets, Close

# Sample Cut Sheets Reports

Description	Material	Length	Remarks	Control No	Revision	ItemLabel
18" XS(.500) BE x BE	SA106-B SMLS	32'-7 11/16		000612	00	1
10" Std(.365) BE x BE	SA106-B SMLS	24'-0 3/4		000611	00	2
10" Std(.365) BE x BE	SA106-B SMLS	19'-7 1/2		000609	00	1
10" Std(.365) BE x BE	SA106-B SMLS	6'-10		000610	00	2
10" Std(.365) BE x BE	SA106-B SMLS	4'-10		000604	00	4
10" Std(.365) BE x BE	SA106-B SMLS	4'-5		000604	00	3
10" Std(.365) BE x BE	SA106-B SMLS	3'-6		000610	00	3
10" Std(.365) BE x BE	SA106-B SMLS	2'-11 13/16		000611	00	1
10" Std(.365) BE x BE	SA106-B SMLS	2'-9		000604	00	1
10" Std(.365) BE x BE	SA106-B SMLS	2'-6		000604	00	2
10" Std(.365) BE x BE	SA106-B SMLS	1'-5 9/16		000610	00	1
10" Std(.365) on 18" XS x BE<1'-4>	SA106-B SMLS	1'-5 1/2		000612	00	2
10" Std(.365) on 18" XS x BE<6 3/8>	SA106-B SMLS	7 7/8		000612	00	3
6" Std(.280) BE x BE	SA106-B SMLS	7'-5		000604	00	5
6" XS(.432) BE x BE	SA106-B SMLS	7'-11		000606	00	3
6" XS(.432) BE x BE	SA106-B SMLS	6'-8		000608	00	2
6" XS(.432) BE x BE	SA106-B SMLS	6'-2 9/16		000605	00	1
6" XS(.432) BE x BE	SA106-B SMLS	6'-2 9/16		000606	00	1
6" XS(.432) BE x BE	SA106-B SMLS	5'-9 3/8		000605	00	3
6" XS(.432) BE x BE	SA106-B SMLS	2'-9 5/8		000608	00	1
6" XS(.432) RF x RF	SA106-B SMLS	1'-11		000605	00	5

\*Cut Sheets can be printed, and the report can be saved. Reports can be displayed and manipulated in Excel.\*

Description	Material	Length	Remarks	Control No	Revision	ItemLabel
10" Std(.365) BE x BE	SA106-B SMLS	2'-9		000604	00	1
10" Std(.365) BE x BE	SA106-B SMLS	2'-6		000604	00	2
10" Std(.365) BE x BE	SA106-B SMLS	1'-5 9/16		000610	00	1
10" Std(.365) on 18" XS x BE<1'-4>	SA106-B SMLS	1'-5 1/2		000612	00	2
10" Std(.365) on 18" XS x BE<6 3/8>	SA106-B SMLS	7 7/8		000612	00	3
6" Std(.280) BE x BE	SA106-B SMLS	7'-5		000604	00	5
6" XS(.432) BE x BE	SA106-B SMLS	7'-11		000606	00	3
6" XS(.432) BE x BE	SA106-B SMLS	6'-8		000608	00	2
6" XS(.432) BE x BE	SA106-B SMLS	6'-2 9/16		000605	00	1
6" XS(.432) BE x BE	SA106-B SMLS	6'-2 9/16		000606	00	1
6" XS(.432) BE x BE	SA106-B SMLS	5'-9 3/8		000605	00	3
6" XS(.432) BE x BE	SA106-B SMLS	2'-9 5/8		000608	00	1
6" XS(.432) BE x BE	SA106-B SMLS	1'-11		000605	00	5
6" XS(.432) BE x BE	SA106-B SMLS	1'-8		000605	00	4
6" XS(.432) BE x BE	SA106-B SMLS	4		000605	00	2
6" XS(.432) BE x BE	SA106-B SMLS	4		000606	00	2
6" Sch 120(.562) BE x BE	SA106-B SMLS	25'-7 1/4		000600	00	1
6" Sch 120(.562) BE x BE	SA106-B SMLS	25'-7 1/4		000602	00	1
6" Sch 120(.562) BE x BE	SA106-B SMLS	11'-3 11/16		000601	00	2
6" Sch 120(.562) BE x BE	SA106-B SMLS	11'-3 11/16		000603	00	2
6" Sch 120(.562) RF x RF	SA106-B SMLS	1'-7 11/16		000600	00	2