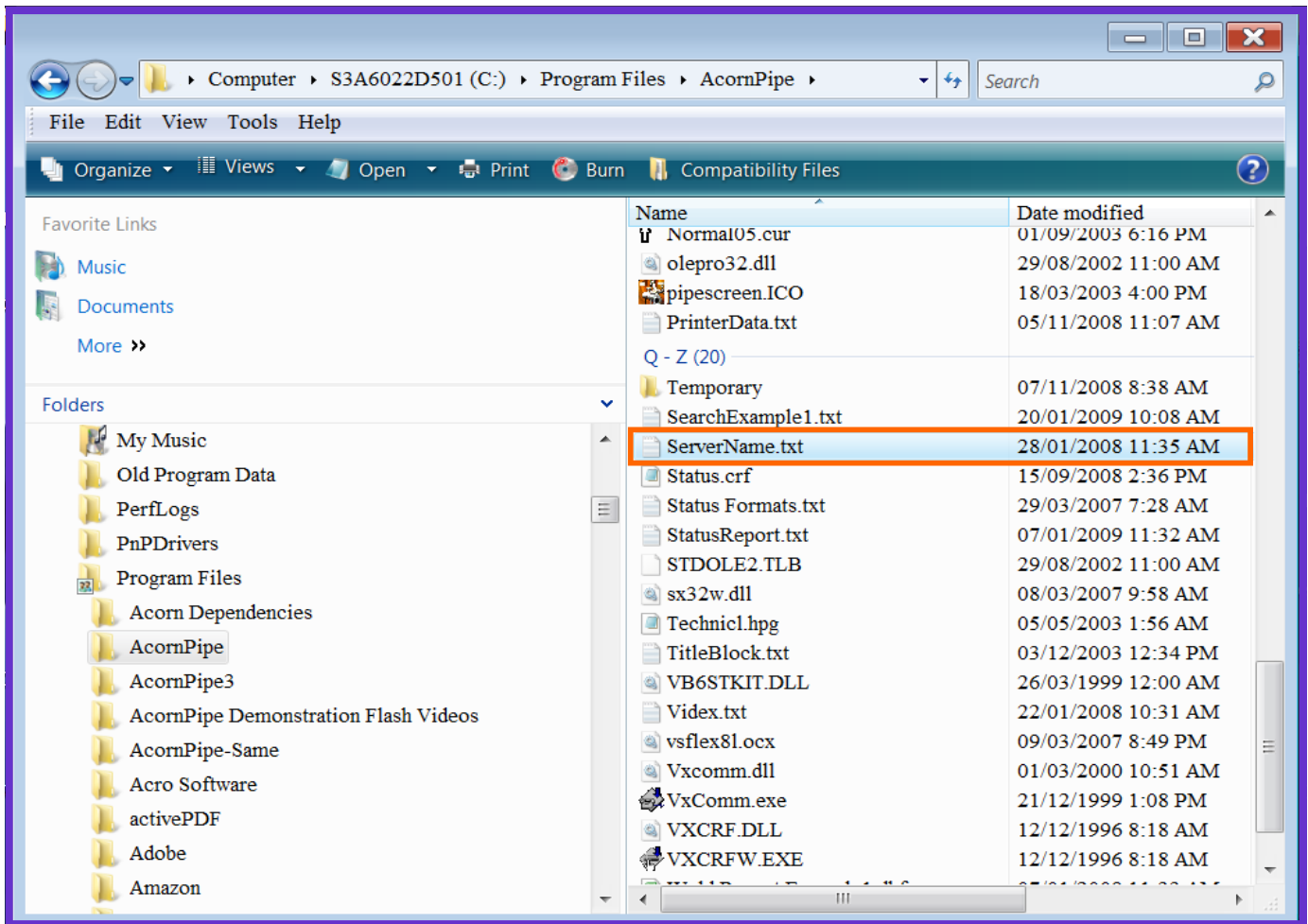


Opening the servername.txt file to add your IP address:



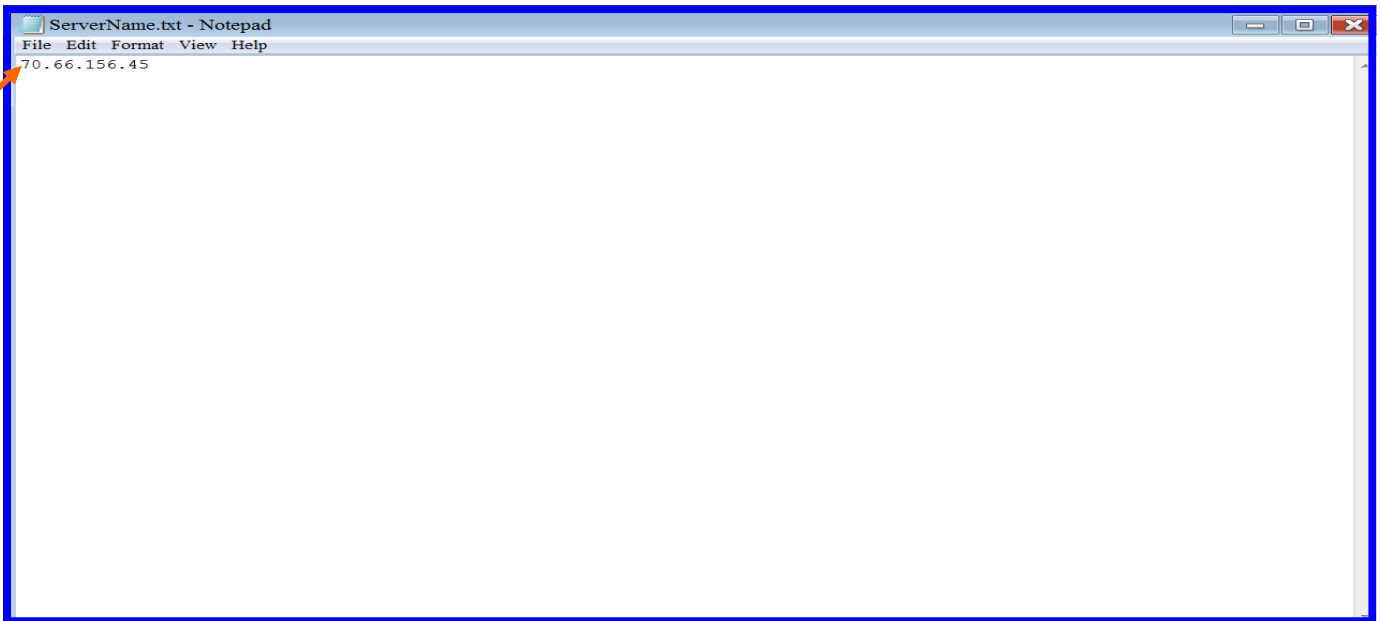
I have used a 'List' to view my files and folders.

Under 'Program Files', find AcornPipe. In the AcornPipe folder there will be a file named 'servername.txt'.

When the Sentinel Key Device is attached to any computer on a network, the other computer terminals attached to the network can find it. This is convenient in a network situation.

If you want to be sure that only specific users find this particular key device, you can edit the servername.txt file to add the IP address of the computer where the sentinel key is attached.

Open this servername.txt file to NotePad to enter the IP address of your computer, or the IP address of the server where the key device is located.



This file will be empty when you open it, unless the IP address has been previously entered. Type your IP address on the top line. Do not press the enter key. Then click on 'File' - 'Save.'

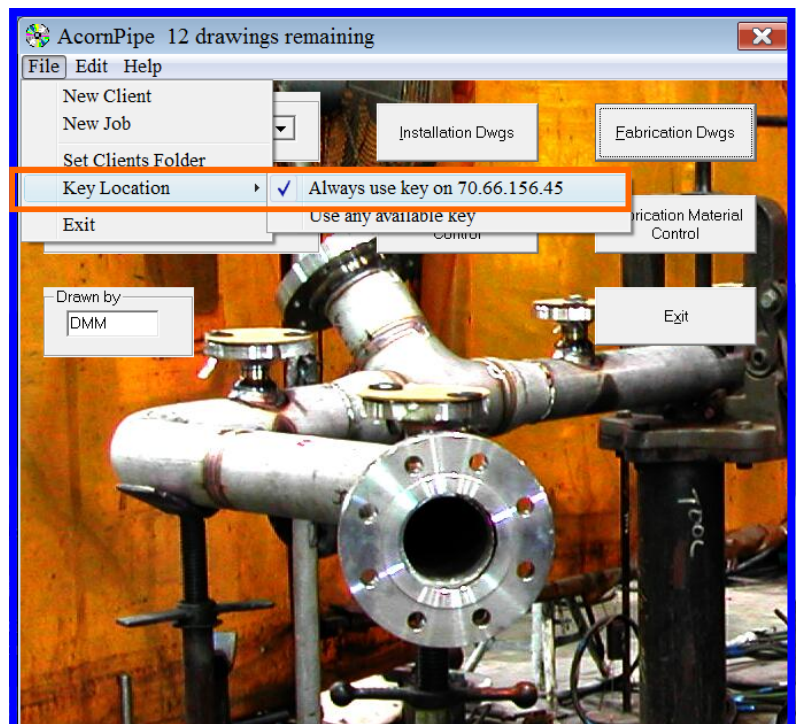
If there is an existing IP address in the file, backspace the old address and type in the new IP Address.

**Your IP address can be found by using the instructions on page 3 of this document, or by visiting a site like www.ipchicken.com .

In the AcornPipe program, click on 'File' and select 'Key Location'.

The servername.txt file content should be displayed here. Select 'Always use key on.....'

This will force AcornPipe to always search for the key device found on the IP Address entered here.



Finding your IP address on Windows XP, Vista, 2000.

Windows 2000, XP, and Vista, using the command prompt

Note: The Windows XP default desktop view and Start menu are different from the Windows Classic View (e.g., in Windows 2000). Therefore, navigating to certain items can be different. In the interest of broad applicability, most Knowledge Base instructions assume you are using Classic View. For information about switching your Windows XP default view to Classic View, see [In Windows XP, how do I switch to the Windows Classic View, Classic theme, or Classic Control Panel?](#)

Click Start, and then select **All Programs (XP and Vista)** or **Programs (2000)**.

Click Accessories, and then **Command Prompt**.

At the command prompt, enter: ipconfig

The IP address (**or IPv4 address, if you are using Windows Vista**) will be a series of numbers following the pattern xxx.xxx.xxx.xxx (i.e., 156.56.27.32).

Note: If you are using PPP with a modem at home, your IP address will change each time you log in.

Windows Vista, without using the command prompt

From the Start menu, right-click Network, and then select **Properties**. This opens the Network and Sharing Center.

If you want to view the IP address of a wired connection, click View Status to the right of Local Area Connection.

If you want to view the IP address of a wireless adapter, click View Status to the right of Wireless Network Connection.

Click Details... . Look for the address next to "IPv4 IP Address".

Windows XP, without using the command prompt

From the Start menu, right-click My Network Places, and then click **Properties**.

If you want to view the IP address of a wired connection, double-click Local Area Connection.

If you want to view the IP address of a wireless adapter, double-click Wireless Network Connection.

Click the Support tab, and then click Details... . The window that appears will display the IP address.